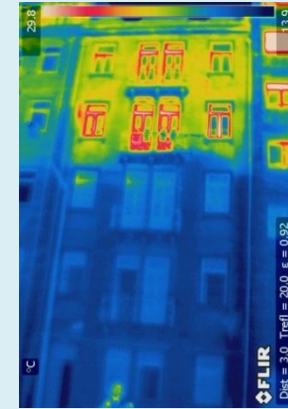
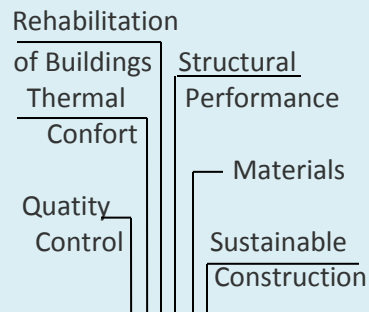




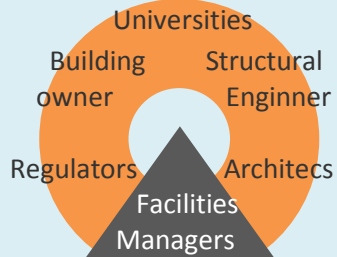
+351 218 443 402



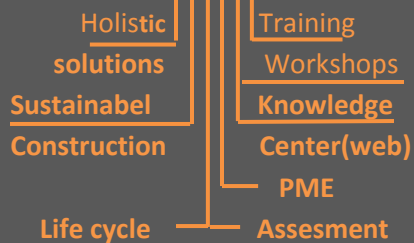
fields



stakeholders



actions



construction industry



universites and reserch



public entities / associations



Invited public entities / associations:



PTPC: Av do Brasil, 101 – 1700-066 – Lisboa – Portugal
geral@ptpc.pt

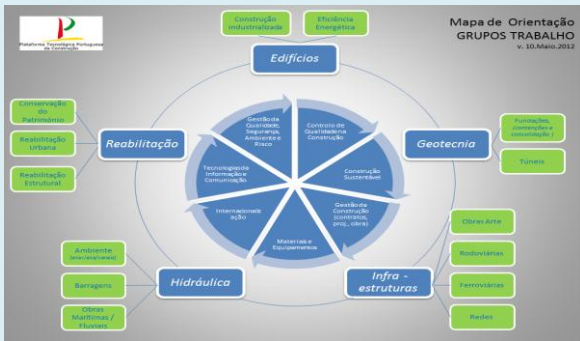
hello! we are

GT REABILITAÇÃO

The Rehabilitation workgroup of PTPC



Plataforma Tecnológica Portuguesa da Construção



about us

The Portuguese Technology Platform for Construction (PTPC – Plataforma Tecnológica Portuguesa da Construção) aims to promote the construction industry modernization and to support innovation and I&D initiatives.

These actions will contribute to increasing company's competitiveness in the global economy aggregating and promoting cooperation between companies, entities of National Technological and Scientific System, public or private entities of construction industry and public works sector or related with it.

The PTPC is organized into several working groups that work proactively to produce technical outputs that meet the strategic guidelines of PTPC and, therefore contribute to improve the construction industry efficiency and effectiveness.

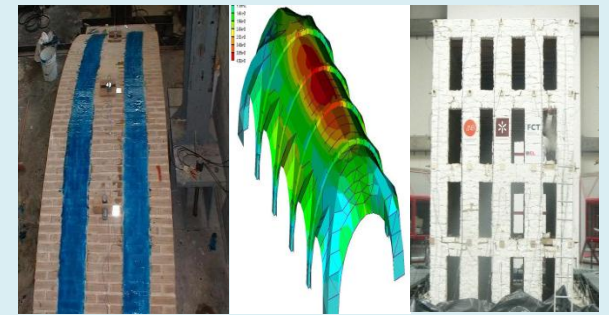
It is within context that the REHABILITATION Working Group (GT REABILITAÇÃO) appears, aiming to support the implementation of good practices and the technological development of rehabilitation interventions in two fields: Structural behavior and Comfort/Energy efficiency.



events

Rehabilitation Working Group (GT REABILITAÇÃO) has developed actions to raise awareness for good practices and innovative solutions, that respond efficiently to all aspects of rehabilitation with controlled cost and in a sustainable manner.

GT REABILITAÇÃO promoted a Workshop "Rehabilitation of Buildings - Structural performance and energy efficiency". The session was attended by 120 participants and outstanding speakers from the group members, who presented topics related to the proposed objectives, and developed during the first year of the GT Rehabilitation, namely: "Evaluation of the life cycle of buildings"; "Strategic reflection on the reduction of seismic vulnerability of buildings" and "Reflection on energy efficiency and incentives in rehabilitation"



our work

Rehabilitation is in essence a more sustainable construction industry in that consisted in integral "recycling" of existing constructions adapting them to new conditions of use.

Focus in the fact that the future for construction in Europe for is Rehabilitation, REABILITAÇÃO Working Group (GT REABILITAÇÃO) as two major motivations:

- develop a Rehabilitation Knowledge Center Web-platform to centralize relevant knowledge in the field of rehabilitation;
- promote holistic solutions in rehabilitation: structural behavior (including seismic resistance), comfort (thermic, acoustic ...) and sustainability;

